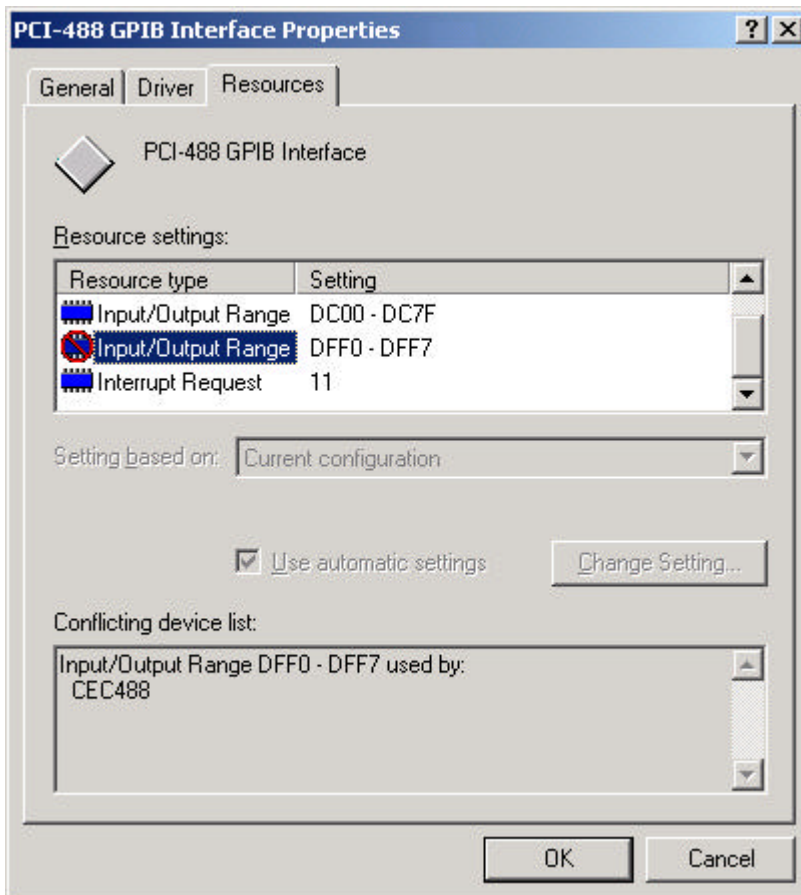
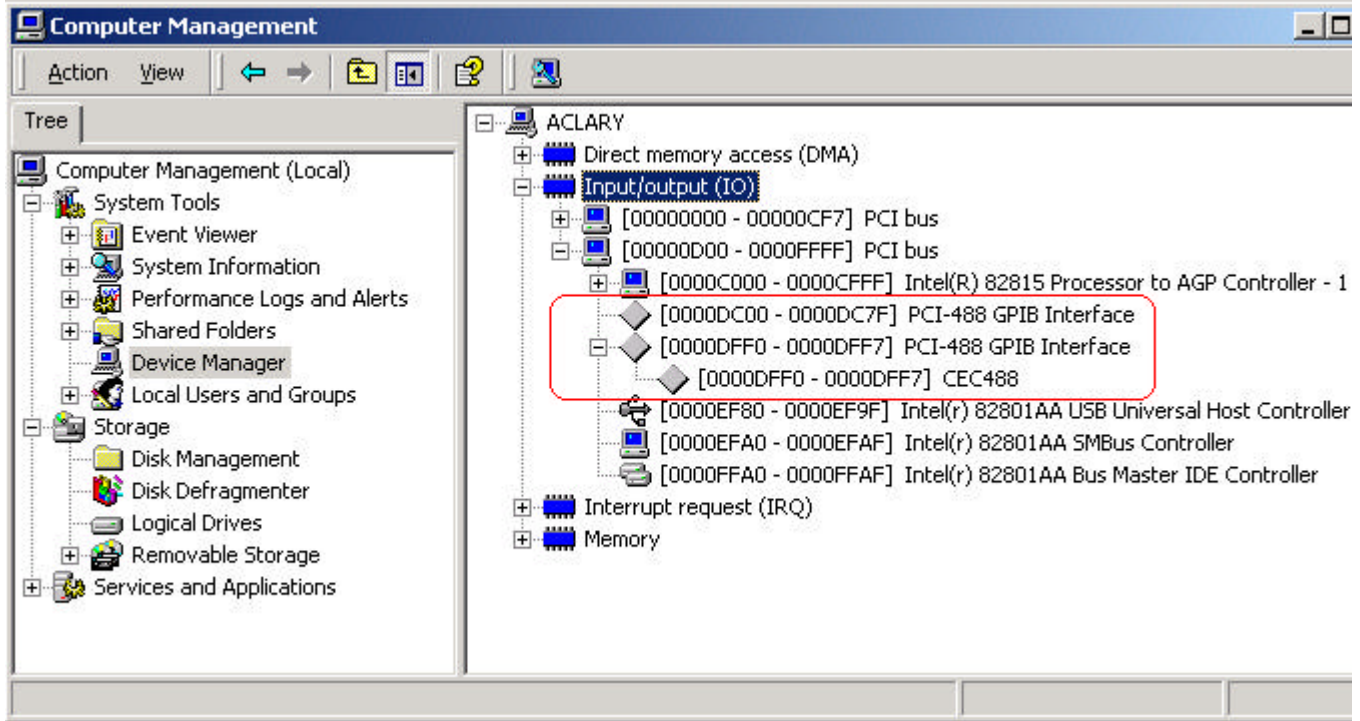


## Why does my KPCI-488 card show a conflict in Device Manager under Windows2000 or WindowsXP?

When using a version of the driver lower than 6.02, if the resources used by the "PCI-488 GPIB Interface" are looked at in Device Manager, one of the Input/Output ranges shows a conflict. Near the bottom of the dialog the conflicting device is listed: CEC488.



If the View menu is used to select "resources by connection", then an hierarchical view is presented. This again shows "CEC488" using the same I/O range as the "PCI-488 GPIB Interface".



**Why does this happen?** The driver (version 6.01 and lower) for the KPCI-488 card, is really a driver for WindowsNT. A WinNT driver is known as a service and in this case the name of the service is "CEC488". All software that communicates with the KPCI-488 uses this service. In contrast to WinNT, Windows 2000 and Windows XP are Plug-and-Play operating systems. The operating system is aware not only of the installed CEC488 service, but also of the presence of the PCI card, the "PCI-488 GPIB Interface". The operating system knows what resources are used by the PCI card and is indicating a conflict with the CEC488.

This conflict does not affect the proper operation of the KPCI-488 card. Version 6.02 of the driver corrects this cosmetic issue.